



C O M M E R C I A L O V E R H E A D D O O R S



COMMERCIAL

Buyer's Guide

PLEASE VISIT OUR WEBSITE AT WWW.CHIOHD.COM TO SEE OUR ENTIRE LINE OF SECTIONAL AND ROLLING STEEL DOORS.

VISIT YOUR DOOR PROFESSIONAL AT:

C.H.I. Overhead Doors are manufactured in Arthur, Illinois, USA.

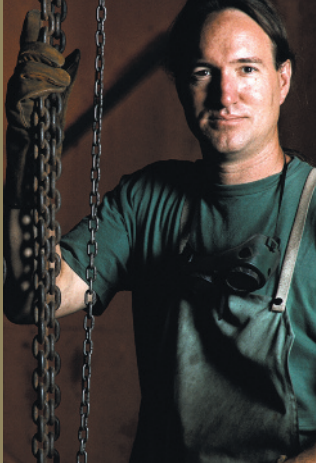
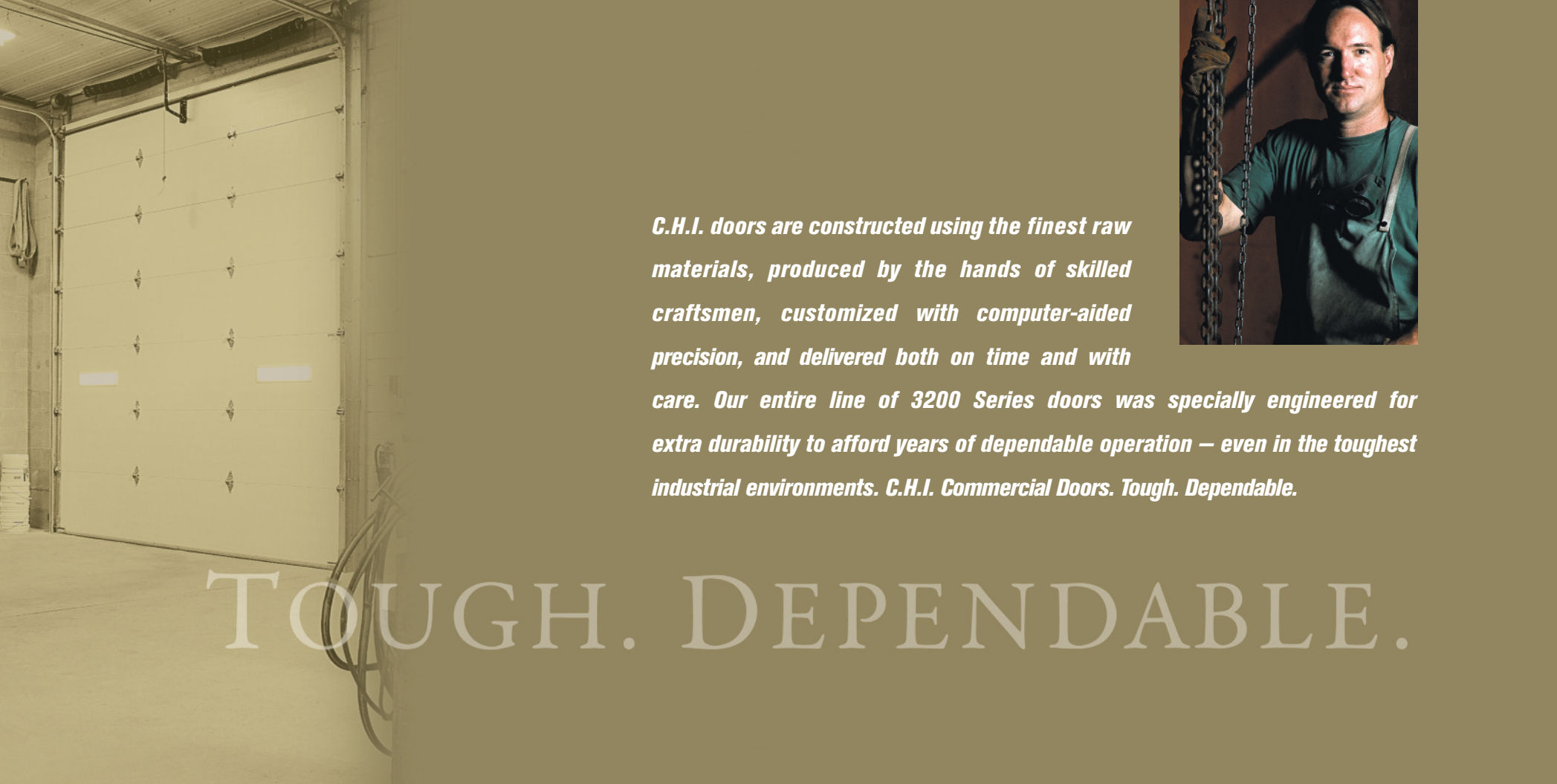


THE DOOR TO QUALITY.

C.H.I. Overhead Doors
1485 Sunrise Drive
Arthur, Illinois 61911
www.chiohd.com

Catalog Number CM-B60905R5
© 2011 C.H.I. Overhead Doors 0905





C.H.I. doors are constructed using the finest raw materials, produced by the hands of skilled craftsmen, customized with computer-aided precision, and delivered both on time and with care. Our entire line of 3200 Series doors was specially engineered for extra durability to afford years of dependable operation — even in the toughest industrial environments. C.H.I. Commercial Doors. Tough. Dependable.

TOUGH. DEPENDABLE.



For commercial applications, TOUGHNESS is the name of the game. Because commercial-use doors see a lot of action, they need to be durable and long-lasting. C.H.I.'s line of tough, heavy-duty commercial doors are built to withstand a higher volume of operation, so you can be sure they'll be around for a long time. And C.H.I. backs up all of its commercial doors with a 10-year limited warranty, because you want to feel good about your decision.

THE 3200 SERIES —
PREMIUM COMMERCIAL DOORS.





THE 3200 SERIES

You need a door that works as hard as you. That's why we developed one of the sturdiest lines of doors available. Here's a closer look at our collection; for your money, you won't find a stronger, more reliable door anywhere.



Regardless of your specific application, C.H.I. offers a premium door product guaranteed to deliver years of dependable operation. Our ribbed steel models are constructed with heavy-duty 18-gauge stiles for enhanced longevity and come in a variety of gauges, both hollow and insulated. There are multiple track systems, and a variety of door colors as well. And because commercial applications vary, C.H.I. offers numerous customization options to fit your specific needs.

After comparing models, if you're not sure which C.H.I. commercial door is right for you, talk to your authorized C.H.I. distributor. Their expertise can help you determine the best C.H.I. door for your needs.

MODEL 3250

Uninsulated, 25-gauge ribbed steel available in white only.

MODEL 3251

Polystyrene Insulation with vinyl back, 25-gauge ribbed steel available in white only. R-value: 6.52

MODEL 3252

Polystyrene Insulation with 27-gauge steel back, 25-gauge ribbed steel available in white only. R-value: 6.52

MODEL 3240

Uninsulated, 24-gauge ribbed steel available in white, brown, sandstone or gray.

MODEL 3241

Polystyrene Insulation with vinyl back, 24-gauge ribbed steel available in white, brown, sandstone, or gray. R-value: 6.52

MODEL 3242

Polystyrene Insulation with 27-gauge steel back, 24-gauge ribbed steel available in white, brown, sandstone or gray. R-value: 6.52

MODEL 3220

Uninsulated, 20-gauge ribbed steel available in white only.

MODEL 3221

Polystyrene Insulation with vinyl back, 20-gauge ribbed steel available in white only. R-value: 6.52

MODEL 3222

Polystyrene Insulation with 27-gauge steel back, 20-gauge ribbed steel available in white only. R-value: 6.52

MODEL 3285

Insulated, 26-gauge micro-grooved polystyrene sandwich door, 2" thick polystyrene insulated available in white, almond, sandstone or brown. R-value: 8.74

MODEL 3216

2" thick, 26-gauge, urethane-filled, sandwich micro-grooved door available in white, almond, sandstone, or brown. R-value*: 17.54

MODEL 3212

2" thick, 20-gauge, urethane-filled, sandwich micro-grooved door available in white. R-value*: 17.54

MODEL 3295

Aluminum full-view door available in clear anodized aluminum or a selection of stock RAL powder-coat options of 188 colors.

*R-value Testing is in accordance with ASTM C518 standards.

MODEL 3250*	25-gauge, Uninsulated
MODEL 3251*	25-gauge, Insulated vinyl back
MODEL 3252*	25-gauge, Insulated steel back
MODEL 3240	24-gauge, Uninsulated
MODEL 3241	24-gauge, Insulated vinyl back
MODEL 3242	24-gauge, Insulated steel back
MODEL 3220	20-gauge, Uninsulated
MODEL 3221	20-gauge, Insulated vinyl back
MODEL 3222	20-gauge, Insulated steel back

SECTIONS

Roll-formed steel sections are 2" thick, hot-dipped galvanized with a baked-on polyester finish

- Sections are available in:
20-gauge white
24-gauge white, brown, gray or sandstone
25-gauge white
- Stiles are box-shaped and galvanized
- Section joints are tongue-and-groove
- Bottom "U" type astragal is a standard feature
- Stiles are face-riveted vs. glued

TRACKS

- Tracks are 2" or 3", as specified
- Available in bracket mount, angle mount, clip angle mount, 12" radius, 15" radius, high lift, vertical lift, roof pitch, or dual track low headroom

HARDWARE

- Package includes 11-gauge or 14-gauge hinges as specified
- 2" or 3" short-stem or long-stem ball bearing rollers
- Heavy-duty adjustable top roller brackets

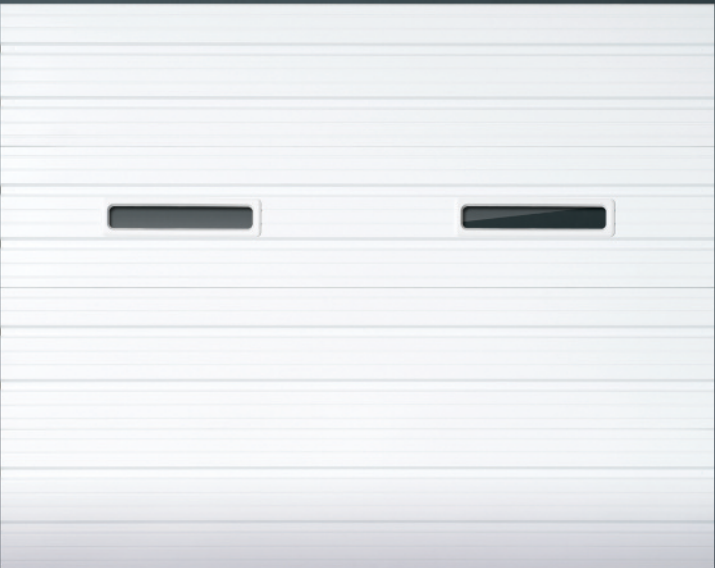
SPRINGS

- Torsion springs are helically wound with oil-tempered wire
- Springs are individually-calibrated for each door
- Torsion tubes are galvanized for rust resistance
- High cycle spring options may be specified

INSULATION TYPE

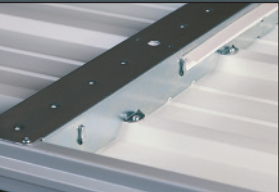
- Polystyrene with high impact vinyl back cover
- Polystyrene with 27-gauge steel back cover
- Stiles include special clips to hold insulation retainer in position
- Insulated doors have an R-value of 6.52

**The steel characteristics and thickness used in models 3250/3251/3252 are equivalent to the "nominal 24 gauge" classification used by other manufacturers in the door industry.*



9' x 7' 3252 white with optional 24" x 6" windows.

These models are also available in



Box type stiles include unique tabs to keep insulation retainer clips tight against the stiles.



Section joints on all C.H.I. doors are tongue-and-groove for a tighter weatherseal and structural rigidity.



Larger doors come standard with double-end hinges and long-stem rollers for smooth operation and long life.



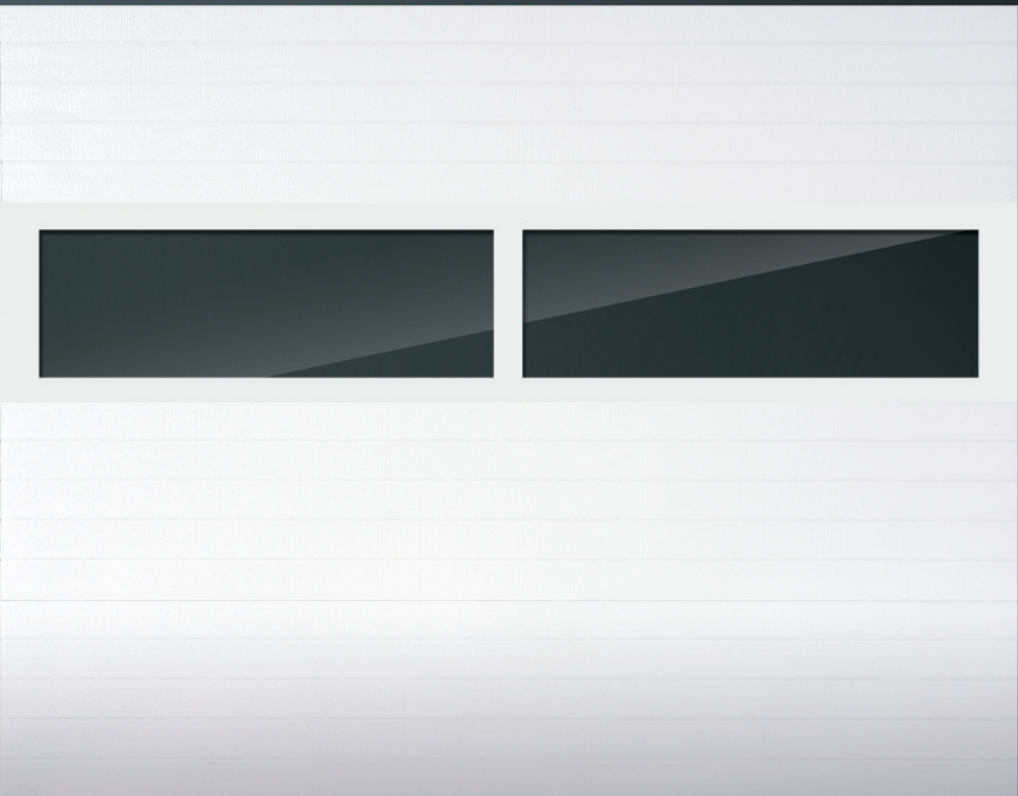
The face skin is attached to the box stiles using semi-tubular rivets vs. adhesives for added rigidity.



Extra-heavy bottom brackets are included for larger door sizes.

RIBBED STEEL DOORS

HEAVY-DUTY. RUGGED.



9' x 7' 3285 white with optional white full-view window section.

This model also available in



MICRO-GROOVED POLYSTYRENE SANDWICH DOOR

DEPENDABLE. RELIABLE.



MODEL 3285 26-gauge, Insulated

SECTIONS

- Features four evenly spaced micro-grooves that run horizontally across each section.
- Double-sided steel doors are 26-gauge front and 27-gauge back for sturdiness
- Concealed steel back-up plates run from top to bottom of each section for secure hardware attachment
- Section joints are tongue-and-groove
- White painted end stiles
- Bottom "U" type astragal is a standard feature
- Available in white, almond, sandstone or brown

TRACKS

- Tracks are 2" or 3", as specified
- Available in bracket mount, angle mount, clip angle mount, 12" radius, 15" radius, high lift, vertical lift, roof pitch, or dual track low headroom

HARDWARE

- Package includes 11-gauge or 14-gauge hinges, as specified
- 2" or 3" long-stem or short-stem steel ball bearings rollers
- Heavy-duty adjustable top roller brackets

SPRINGS

- Torsion springs are helically wound with oil-tempered wire
- Springs are individually-calibrated for each door
- Torsion tubes are galvanized for rust resistance
- High cycle spring options may be specified

INSULATION TYPE

- Polystyrene core that's secured in place with a urethane adhesive to increase structural integrity
- R-value - 8.74

C.H.I. effectively marries expert craftsmanship with computerized precision in the construction of each and every door we make.

MODEL 3216	26-gauge, Polyurethane
MODEL 3212	20-gauge, Polyurethane

- SECTIONS**
- Features four evenly spaced micro-grooves that run horizontally across each section.
 - 2" thick sections are foamed in place with polyurethane for superior R-value
 - Thermally-broken to eliminate thermal conduction
 - Gasket seal between sections provide for an extremely tight weatherseal
 - Concealed steel back-up plates run from top to bottom of each section for secure hardware attachment
 - Bottom "U" type astragal is a standard feature
 - **Model 3216** is available in white, almond, sandstone, or brown
 - **Model 3212** is available in white

- TRACKS**
- Tracks are 2" or 3", as specified
 - Available in bracket mount, angle mount, clip angle mount, 12" radius, 15" radius, high lift, vertical lift, roof pitch, or dual track low headroom

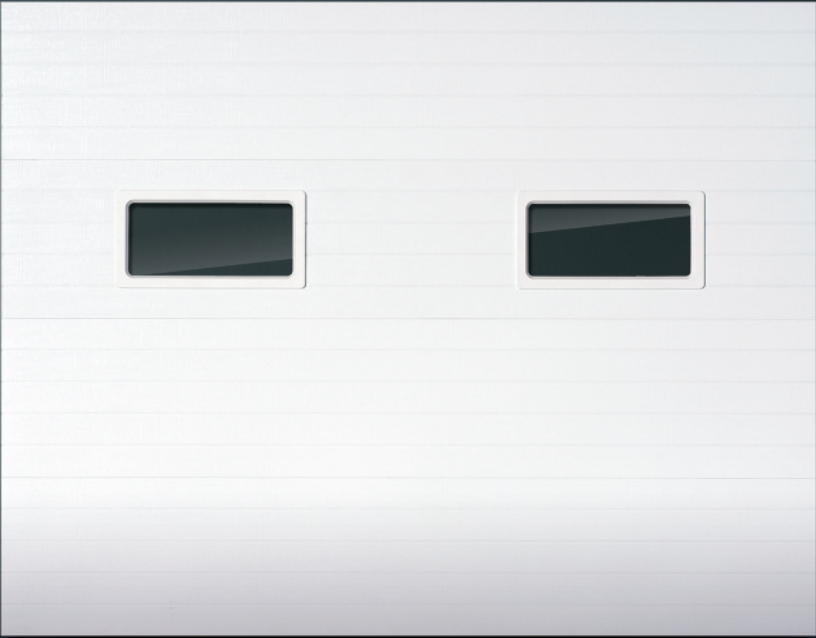
- HARDWARE**
- Package includes 11-gauge or 14-gauge hinges, as specified
 - 2" or 3" short-stem or long-stem ball bearing rollers
 - Heavy-duty adjustable top roller brackets

- SPRINGS**
- Torsion springs are helically wound with oil-tempered wire
 - Springs are individually-calibrated for each door
 - Torsion tubes are galvanized for rust resistance
 - High cycle spring options may be specified

- INSULATION TYPE**
- Foamed-in-place polyurethane core
 - R-value* - 17.54

*R-value Testing is in accordance with ASTM C518 standards.

 C.H.I. Overhead Doors is pleased to use DOW® insulation products in our urthane core garage doors.

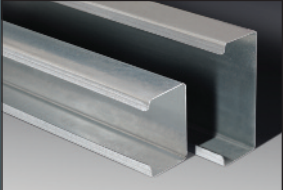


9' x 7' 3216 white with optional 24" x 12" windows.

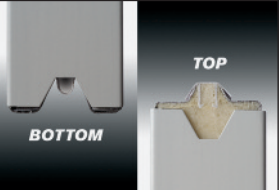
These models are also available in



White painted end stiles are 4" to 8" wide to accommodate double or single-end hinges.



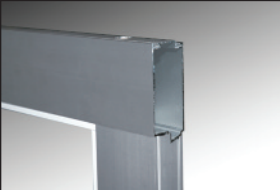
4" or 6" C-channel struts are used for added rigidity on wider door applications.



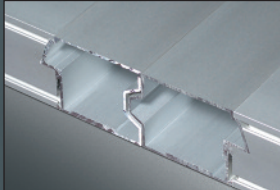
Section joints are gasketed and thermally-broken for a tight weatherseal.



8' x 7' 3295 clear anodized aluminum with plain glass and optional aluminum panels in bottom section.



Sections are assembled with through bolts for added strength. Top seals are available as an option.



Section joints are tongue-and-groove for a superior weatherseal.



Glass replacement is easy using removable inside retainers.



MODEL 3295

- SECTIONS**
- Available in clear anodized aluminum or a selection of stock RAL powder-coat options of 188 colors
 - Sections are 2" thick, and assembled with through bolts at each vertical stile location
 - Section joints are tongue-and-groove for a superior weatherseal
 - Wide bottom rails, top rails, and end stiles create an extra-strong frame for the door
 - Insulated and 1/4" tempered glass is available in some sizes
 - Aluminum panels can be substituted for glass panels
 - Glass or aluminum panels can be easily replaced by removing an inside retainer
 - Bottom "U" type astragal is a standard feature

- TRACK**
- Tracks are 2" or 3", as specified
 - Available in bracket mount, angle mount, clip angle mount, 12" radius, 15" radius, high lift, vertical lift, roof pitch, or dual track low headroom

- HARDWARE**
- Package includes 11-gauge or 14-gauge hinges, as specified
 - 2" or 3" short-stem or long-stem steel ball bearings rollers
 - Heavy-duty adjustable top roller brackets

- SPRINGS**
- Torsion springs are helically wound with oil-tempered wire
 - Springs are individually-calibrated for each door
 - Torsion tubes are galvanized for rust resistance
 - High cycle spring options may be specified

FEATURES



SANDWICH MICRO-GROOVED POLYURETHANE THERMALLY-BROKEN DOOR

DURABLE. THERMALLY-BROKEN.

ALUMINUM FULL-VIEW DOORS

RESILIENT. STURDY.

C.H.I. Overhead Doors, Inc. ("C.H.I.") warrants steel garage door sections used in commercial applications, under normal conditions, against splitting, cracking, rusting through or delaminating for a period of ten (10) years. Hardware, including springs, is warranted against defects in material or workmanship for one (1) year. All warranty periods begin with the date of manufacture. C.H.I.'s obligations are strictly limited to repair or replacement of defective parts and components during the warranty period.

This limited warranty excludes: (1) rust caused by damages or scratching; (2) damage resulting from exposure to corrosive chemicals, corrosive fumes, salt environments including coastal areas, condensation, water or fire; (3) damages caused by accident, improper use, negligent operation, improper installation, improper maintenance or normal wear; (4) delamination caused by impact; (5) shipping, installation or labor charges; (6) defects in paints or coatings used to finish door sections; (7) any product or component which is modified, altered, or not part of the original door, and (8) damages resulting from any circumstances beyond the direct control of C.H.I.

In the event of a defective component, contact the dealer the door was purchased from within fifteen (15) days from discovery of the defect. C.H.I. reserves the right to inspect all products alleged to be defective and to verify eligibility of this limited warranty.

THIS LIMITED WARRANTY EXCLUDES ANY LOSS OR DAMAGE NOT SPECIFICALLY UNDERTAKEN HEREIN, INCLUDING, WITHOUT LIMITATION, ANY CONSEQUENTIAL OR INCIDENTAL DAMAGES, SUCH AS DEATH, INJURY, DAMAGES TO PROPERTY, OR DAMAGES ARISING FROM LOSS OF USE OF ANY PRODUCT OR FACILITY. ALL OTHER WARRANTIES, EXPRESSED OR IMPLIED, INCLUDING ANY WARRANTIES OF FITNESS FOR A PARTICULAR PURPOSE AND OF MERCHANTABILITY, ARE HEREBY EXPRESSLY EXCLUDED.

This warranty is non-transferable.



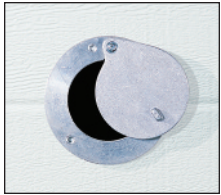
24" x 6" Window



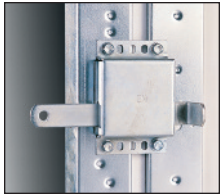
24" x 12" Window



34" x 16" Window



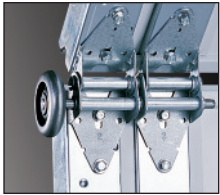
Exhaust Port



Inside Side Lock



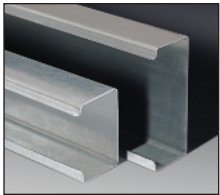
Insulation with Steel Back Cover



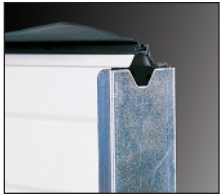
Double-End Hinges



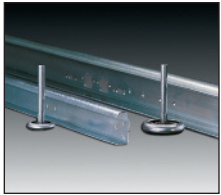
4" or 8" white painted Stiles
(Model 3216 and 3285)



C-Channel Truss 4" and 6"



Top Seal



2" and 3" Tracks



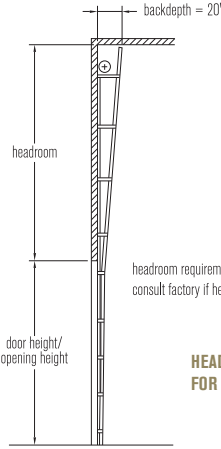
Clip Angle and Full Angle Tracks

DOOR WIDTH/PANEL ACROSS								
DOOR WIDTH	3250/51/52	3240/41/42	3220/21/22	3285	3216	3212	3295	
THRU 9'5"	2	2	2	2	2	2	2	
9'6"-12'11"	3	3	3	3	3	3	3	
13'0"-16'5"	4	4	4	4	4	4	4	
16'6"-20'2"	5	5	5	5	5	5	5	
20'3"-24'2"	-	6	6	6	6	6	-	
24'3"-26'2"	-	8*	-	-	8	-	-	
26'3"-30'2"	-	10*	-	-	10	-	-	
30'3"-32'2"	-	12*	-	-	12	-	-	
32'3"-34'2"	-	12*	-	-	-	-	-	
* 3240 & 3241 ONLY								

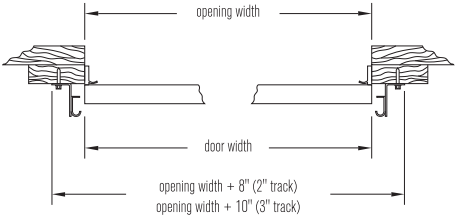
DOOR HEIGHT/NUMBER OF SECTIONS							
DOOR HEIGHT	3250/51/52	3240/41/42	3220/21/22	3285	3216	3212	3295
THRU 8'	4	4	4	4	4	4	4
8'3"-10'	5	5	5	5	5	5	5
10'3"-12'	6	6	6	6	6	6	6
12'3"-14'	7	7	7	7	7	7	7
14'3"-16'	-	8	8	8	8	8	-
16'3"-18'	-	9	-	-	-	-	-
18'3"-20'	-	10*	-	-	-	-	-
* 3240 & 3241 ONLY							

Specifications are subject to change without notice. Note: If adding an electric operator to standard lifts or low headrooms add a minimum of 3". Please note that some optional features shown may not be available on all models, please see distributor for details.

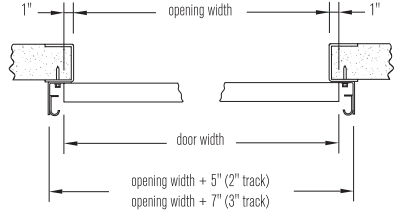
TRACK SYSTEMS



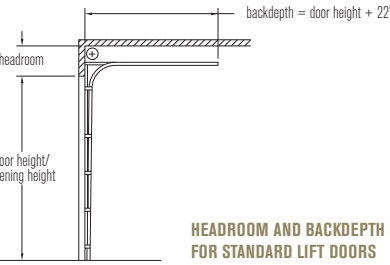
HEADROOM AND BACKDEPTH REQUIREMENTS FOR VERTICAL LIFT DOORS



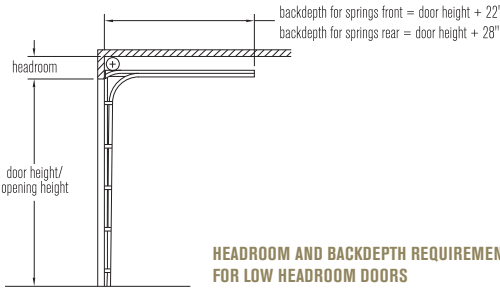
BRACKET MOUNTED TRACK ANGLE MOUNTED TRACK: LEG OUT (WOOD JAMBS SHOWN)



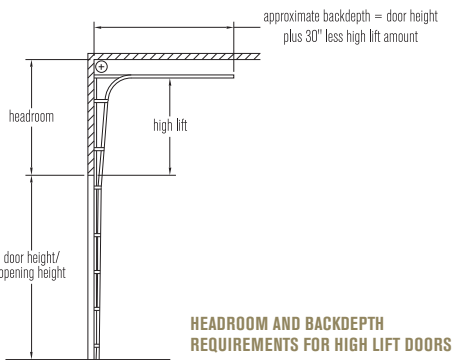
REVERSE ANGLE TRACK: LEG IN (STEEL JAMBS SHOWN)



HEADROOM AND BACKDEPTH REQUIREMENTS FOR STANDARD LIFT DOORS



HEADROOM AND BACKDEPTH REQUIREMENTS FOR LOW HEADROOM DOORS



HEADROOM AND BACKDEPTH REQUIREMENTS FOR HIGH LIFT DOORS

HEADROOM REQUIREMENTS FOR STANDARD LIFT

DOOR HEIGHT	2" TRACK 12" RADIUS	2" TRACK 15" RADIUS	3" TRACK 15" RADIUS
UP TO 12'	12"	15"	15"
12'3"-16'	15"	16"	16"
16'3"-18'	N/A	N/A	16"
OVER 18'	N/A	N/A	21"

VARIOUS SPRING AND DOOR DESIGNS MAY REQUIRE ADDITIONAL HEADROOM. CONSULT FACTORY IF HEADROOM IS CRITICAL.

HEADROOM REQUIREMENTS FOR LOW HEADROOM

TRACK SIZE	TRACK RADIUS	DOOR HEIGHT	TORSION SPRINGS FRONT	TORSION SPRINGS REAR
2"	12"R	UP TO 10'	7"	3"
2"	15"R	UP TO 12'	9"	6"
2"	15"R	12'3"-16'	11"	6"
3"	15"R	UP TO 12'	11"	8"
3"	15"R	12'3"-18'	12"	8"

VARIOUS SPRING AND DOOR DESIGNS MAY REQUIRE ADDITIONAL HEADROOM. CONSULT FACTORY IF HEADROOM IS CRITICAL.

MAXIMUM HIGH LIFT

AVAILABLE HEADROOM	2" TRACK	3" TRACK
UP TO 64"	HEADROOM MINUS 10"	HEADROOM MINUS 11"
65"-131"	HEADROOM MINUS 11"	HEADROOM MINUS 12"
132"-177"	HEADROOM MINUS 13"	HEADROOM MINUS 14"

WHITE

ALMOND

SANDSTONE

BROWN

GRAY

Please note that all color options are not available for all models. Refer to samples at your local C.H.I. distributor for exact color match.



Wind can be unpredictable and destructive. This is why C.H.I. Windbreaker Series and iSeries doors are designed, tested, and built to the most rugged specifications. Wind chamber tested to ensure wind-load resistance, these extra-sturdy designs provide enhanced defense against the elements.

C.H.I. Overhead Doors developed the resilient Windbreaker Series garage doors to protect against high wind conditions. The super-resilient C.H.I. iSeries Impact Approved doors have strength designed to withstand direct collision of projectiles and other windborne debris at high speeds.

SPECIFICATIONS, OPTIONAL FEATURES AND ACCESSORIES

Because commercial applications vary, C.H.I. offers a number of innovative ways to customize your door.

PROFESSIONAL CHOICES.

